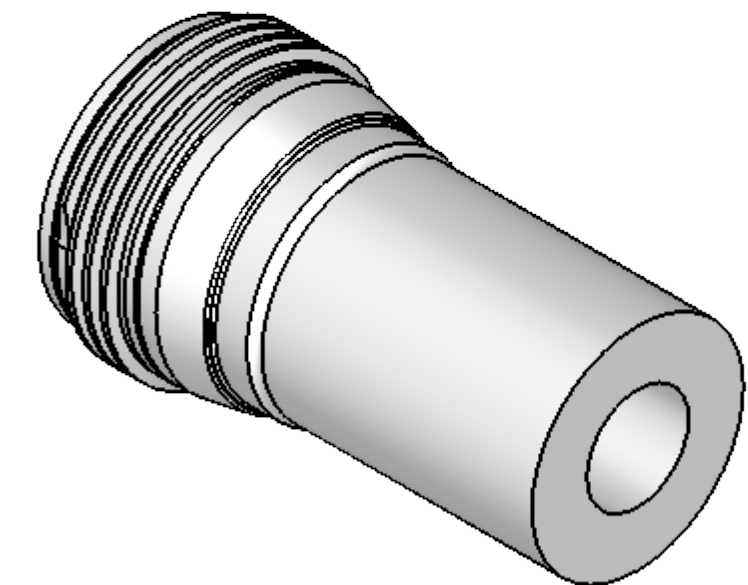
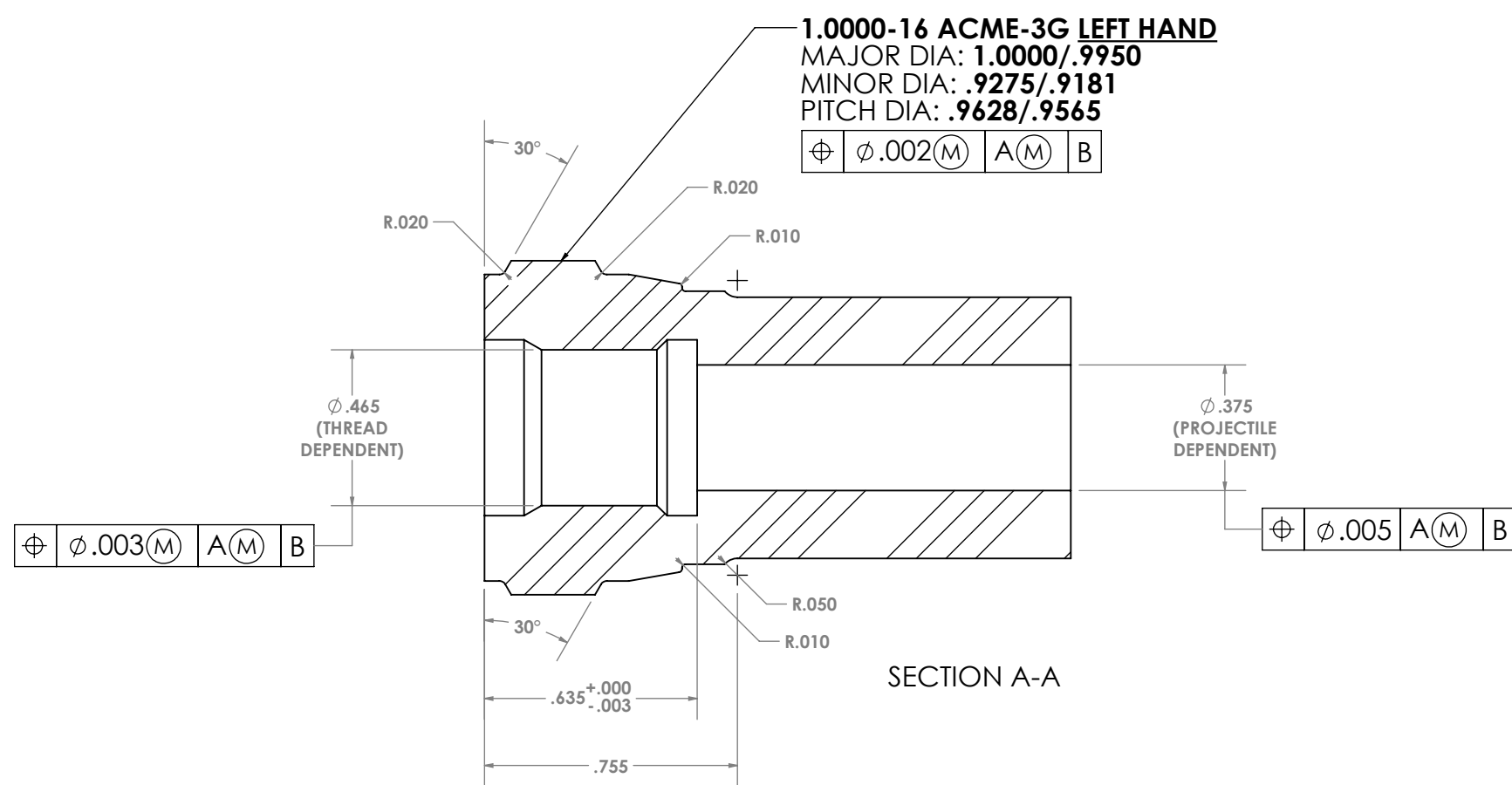
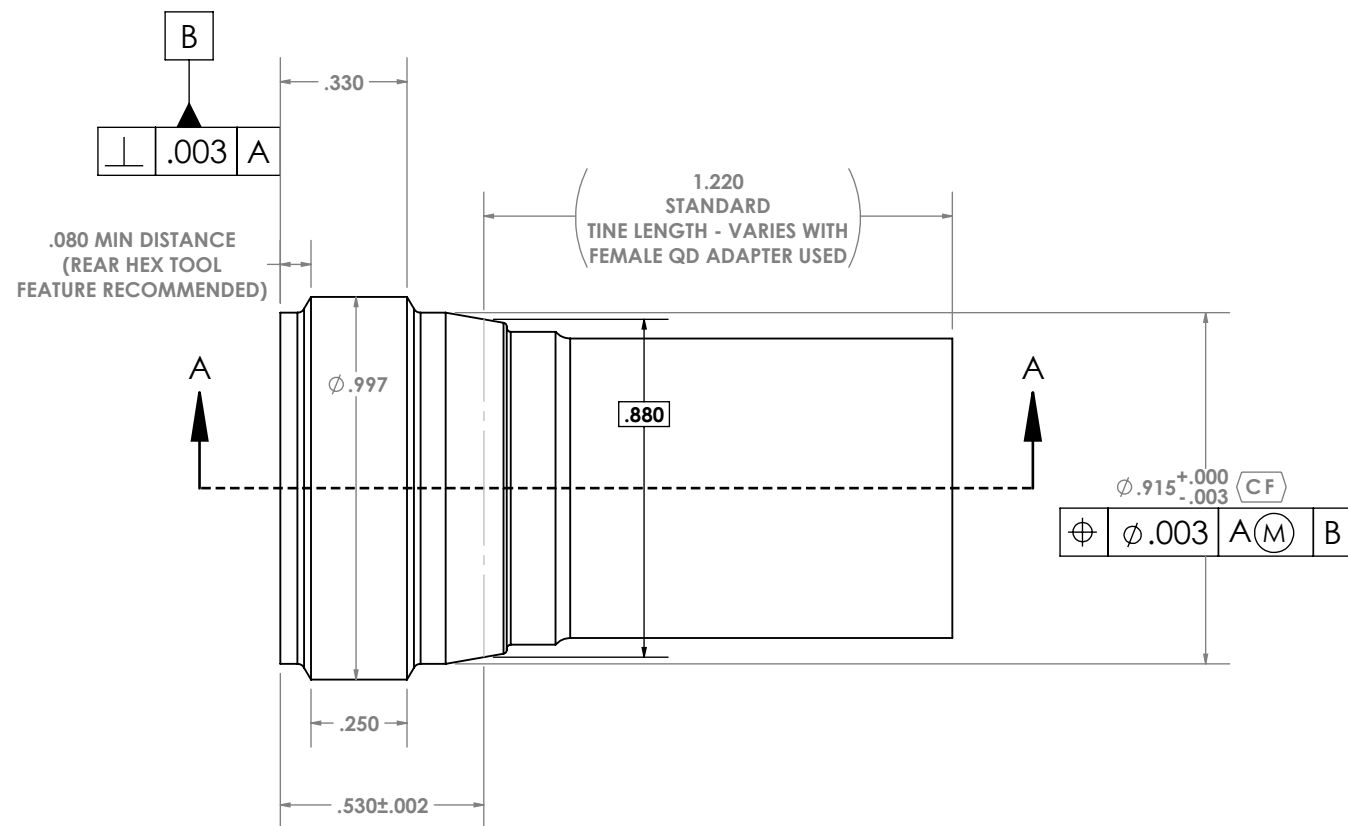
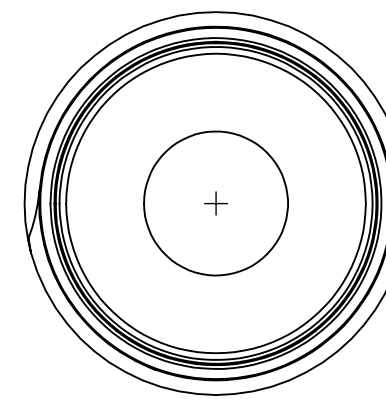
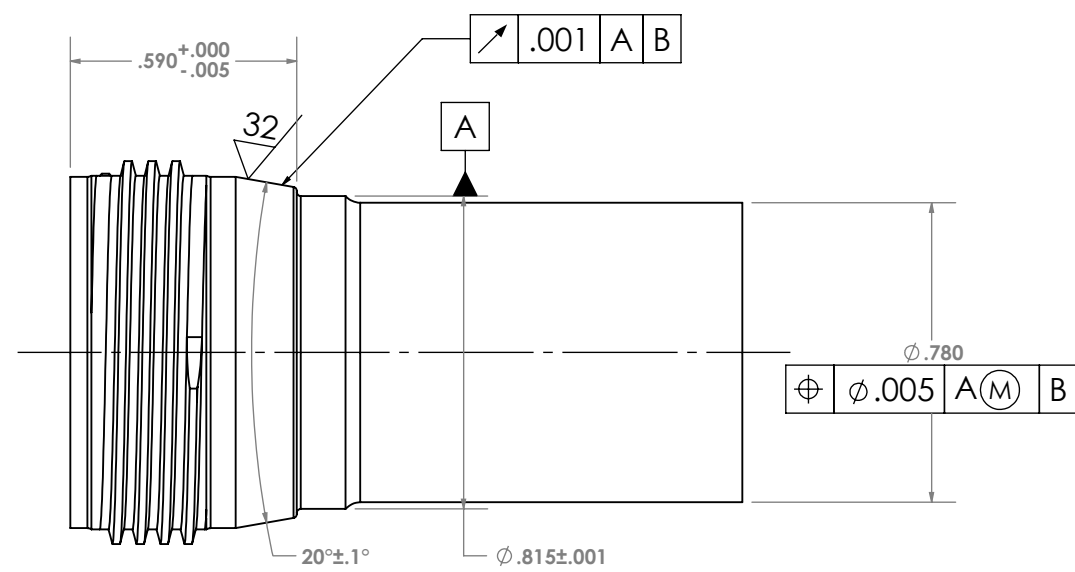
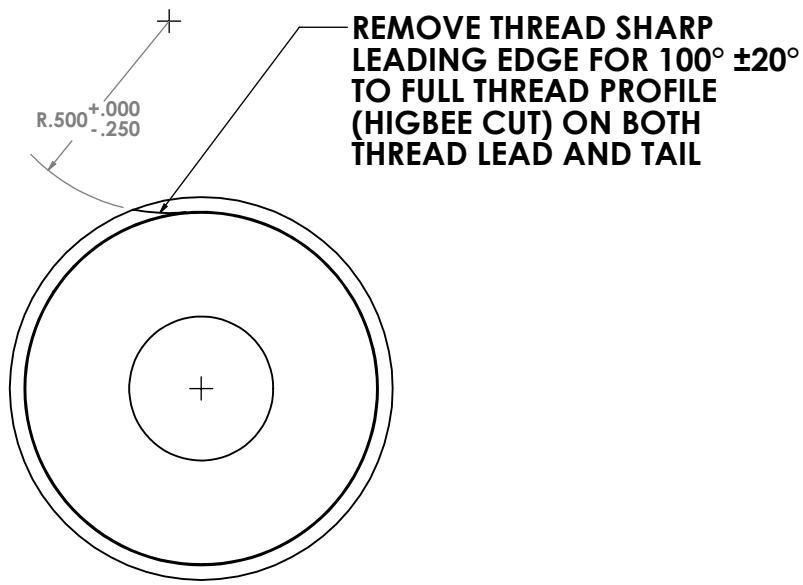


4

3

2

1



MUZZLE DEVICE BASE.QD.1-16 LH ACME-3G.20 DEG TAPER

THIRD ANGLE PROJECTION 	UNLESS OTHERWISE SPECIFIED: TOLERANCES: ANGLES: ±1° TWO PLACE DECIMAL: ±.01 THREE PLACE DECIMAL: ±.005 EDGE BREAKS: .005 TO .010 FILLETS AND ROUNDS: R.005 TO R.010 INTERPRET DRAWING PER: ASME Y14.5-2009 MATERIAL: FINISH: APPLICATION:	NAME: MJK DATE: 20 MAY 2021	TSF / CAT TITLE: MUZZLE DEVICE BASE.QD.1-16 LH ACME-3G.20 DEG TAPER SIZE: C DWG. NO.: SCALE: 2:1
		CHECKED: DAC DATE: 23 MAY 2021	
PROPRIETARY AND CONFIDENTIAL DO NOT SCALE DRAWING		COMMENTS: ADDITION OF REAR HEX TOOL FEATURE IS STRONGLY RECOMMENDED. TINE LENGTH MAY VARY IN COMBINATION WITH THE FEMALE QD ADAPTER USED TO ENSURE SUFFICIENT OFFSET DISTANCE. EXAMPLE - LONGER TINES ALLOWABLE WHEN USING A LONGER OFFSET FEMALE QD ADAPTER	

4

3

2

1