

CAT/MOB/MANUAL

MOB

WARNING - MATERIAL SPECIFIC FACTS

TITANIUM Ti6Al4V

C.A.T Mobster (MOB) Titanium 9mm SMG suppressors have no barrel length restrictions for 9mm and similar cartridges. MOB is additionally rated for 8.6mm Subsonic cartridges, provided that the bullet is properly stabilized and doesn't expand prematurely inside the suppressor (this has been seen with certain 8.6mm cartridges, so please research ammunition accordingly). While optimized for 9mm HRF use, users should not exceed a maximum service temperature of approximately **650°F (343°C)**. Once this temperature threshold is reached, the suppressor should be allowed to cool down. Titanium Ti6Al4V has inherent material properties which give the material a lower heat conductivity rating, and the suppressor is susceptible to particle erosion and melting past this temperature limit. If the user notices discoloration on the exterior discontinue use and allow it to cool down. **Do not dip the suppressor in water in an attempt to cool it down.**

C.A.T recommends MOB Titanium users invest in an infrared thermometer and create their own platform specific firing schedule, based on ammunition and barrel length. It is recommended to create this firing schedule by shooting five round groups, with one second intervals between rounds, then testing the temperature of the suppressor up to **550°F (288°C)**. At this operating temperature, the user should record the amount of time until the suppressor returns to **150°F (65°C)**. This would become the baseline firing schedule based on the user's platform and ammunition type.

C.A.T MOB Titanium has a dedicated "waffle" style erosion interface at the end of the blast chamber. This is a sacrificial erosion wall, and users should not be concerned if they are seeing wear, this is designed to support the erosion caused by unburnt particulates (especially in short barrel platforms) and is designed to protect other internal areas inside of the suppressor.

Excessive white sparking may be noticed upon first use, this is due to microscopic Titanium dust from the Additive Manufacturing process. Over the course of use this white sparking will subside but will never fully disappear. Titanium white sparking is separate from flash and cannot be controlled by a flash hider or other methods, as it is a byproduct of Titanium being classed as a reactive metal.

CAT/MOB/1.375x24 HUB



MODEL: CAT/MOB/A1
CALIBER: 9 MM
WEIGHT TITANIUM: 10.2 OZ (CORE) *
OVERALL LENGTH: 7.39"
DIAMETER: 1.65"
MIN BARREL LENGTH (TITANIUM):
NO RESTRICTIONS
RECOMMENDATION: 9MM SMG/PCC
FINISH: DLC
MOUNTING: 1/2x28 DIRECT THREAD
(INCLUDED)

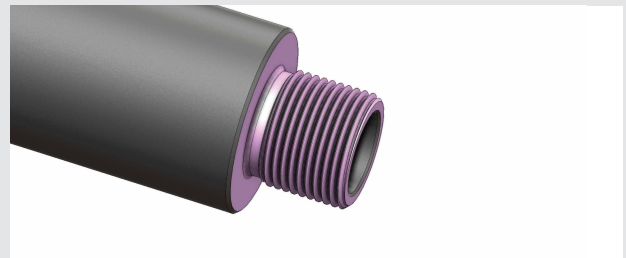
INSTALLATION

STEP 1

Remove the magazine from the firearm, then visually and manually check and clear the action and chamber of the firearm. Ensure the host firearm is unloaded at all times.

STEP 2

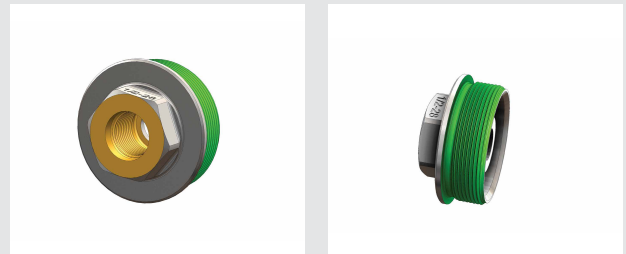
Always ensure the barrel thread and shoulders are clean and free of debris. To prepare to install the 1/2x28 direct thread mount, clean the barrel threads and make sure barrel shoulder is also clean (pink surfaces).



IF USING THE INCLUDED 1/2X28 DIRECT THREAD MOUNT:

STEPS 3,4 & 5

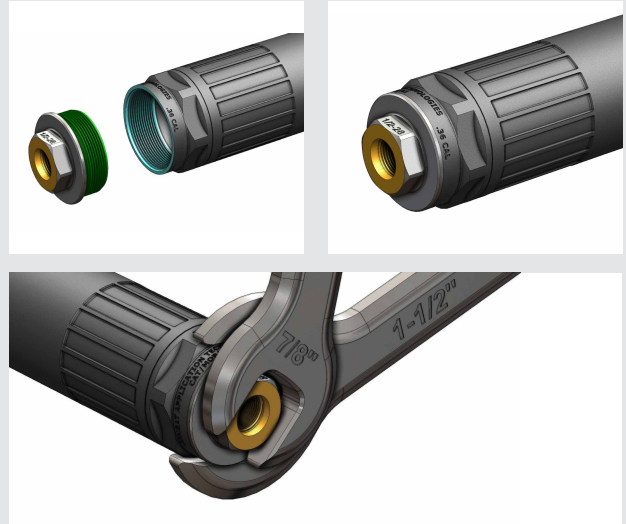
Prior to installing the 1/2x28 direct thread mount on the silencer, inspect the mounting interface surfaces of the direct thread mount and ensure the threads and shoulders are clean and free of debris (gold and green surfaces). Ensure the CAT MOB silencer internal 1-3/8x24 (1.375x24) thread is clean and free of debris (blue).



INSTALLATION

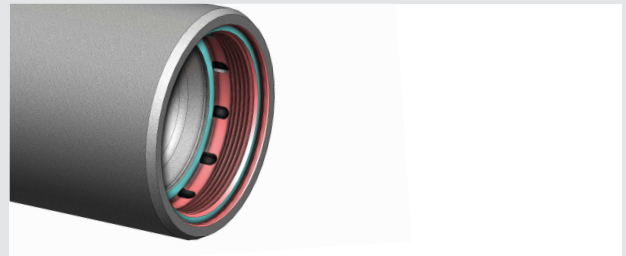
STEPS 6,7 & 8

Screw the direct thread mount into the back of the CAT MOB silencer and torque it down, with a 1-1/2" (1.500") wrench on the CAT MOB wrench flats and a 7/8" (.875") wrench on the direct thread mount wrench flats, to 25-30ft/lb. If you choose to use a thread locker between the direct thread mount and the CAT MOB, degrease the threads and allow the thread locker to fully cure before using the firearm.



STEP 9

Prior to installing the MOB front cap, inspect the internal mounting surfaces of the CAT MOB front cap interface and ensure the critical mounting surfaces are clean and free of debris (red surfaces - pay special attention to making sure the blue shouldering regions are clean and free of debris).



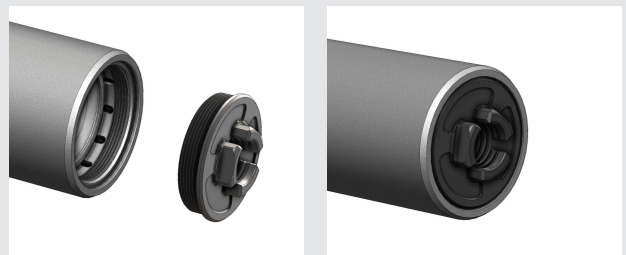
STEP 10

Inspect the MOB front cap and ensure the critical surfaces are clean and free of debris (green surfaces, especially the shouldering surface).



STEPS 11 & 12

Ensure the front cap is firmly installed by using an 11/16" (.6875") wrench or socket to screw it in CLOCKWISE (right hand to tighten).



INSTALLATION

IF USING THE CAT TSFX QD MOUNT (SOLD SEPARATELY):

STEPS 1 & 2

Prior to installing the CAT TSFX QD mount in the silencer, inspect the mounting interface surfaces of the CAT TSFX QD mount and ensure the critical mounting surfaces are clean and free of debris (red/blue surfaces internal and green surfaces external - pay special attention to making sure the blue internal taper shoulder region is clean and free of debris). Ensure the CAT MOB silencer internal 1-3/8x24 (1.375x24) thread is clean and free of debris (blue).



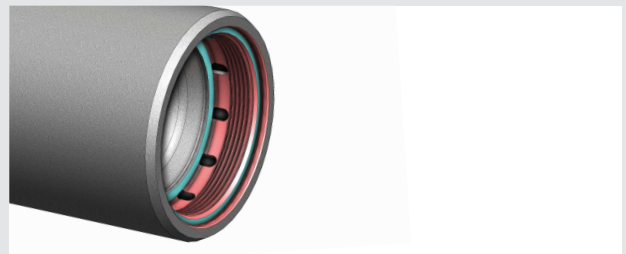
STEPS 3,4 & 5

Screw the CAT TSFX QD mount into the back of the CAT MOB silencer and torque it down, with a 1-1/2" (1.500") wrench on the CAT MOB wrench flats and a 1-3/16" (1.1875") wrench on the CAT TSFX QD mount wrench flats, to 25-30ft/lb. If you choose to use a thread locker between the CAT TSFX QD mount and the CAT MOB, degrease the threads and allow the thread locker to fully cure before using the silencer on a firearm.



STEP 6

Prior to installing the MOB front cap, inspect the internal mounting surfaces of the CAT MOB front cap interface and ensure the critical mounting surfaces are clean and free of debris (red surfaces - pay special attention to making sure the blue shouldering regions are clean and free of debris).



INSTALLATION

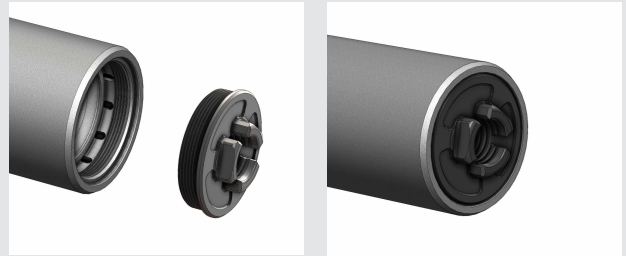
STEP 7

Inspect the MOB front cap and ensure the critical surfaces are clean and free of debris (green surfaces, especially the shouldering surface).



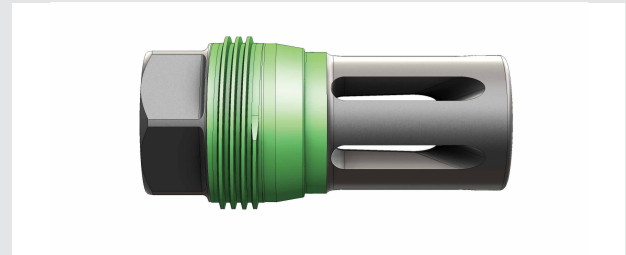
STEPS 8 & 9

Ensure the front cap is firmly installed by using an 11/16" (.6875") wrench or socket to screw it in CLOCKWISE (right hand to tighten).



STEP 10

Inspect the muzzle device and ensure the critical surfaces are clean and free of debris (green surfaces, especially the taper shoulder).



STEPS 11 & 12

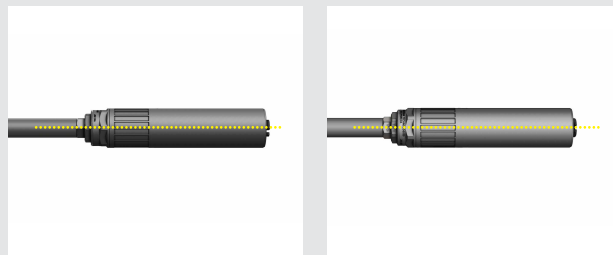
To install the CAT MOB with CAT TSFX QD mount assembly onto the firearm, again ensure the firearm is completely unloaded and safe, then slide the assembly over the CAT 1x16LH QD muzzle device (sold separately) and thread it on COUNTER-clockwise (left hand to tighten) and tighten the CAT MOB strongly by hand to the muzzle device like you don't want it to come off, tightening the CAT MOB fully against its taper shoulder interface. When MOB is properly installed this taper shoulder interface will prevent loosening during use. If you choose to use a thread locker between the CAT TSFX QD mount and the CAT MOB, degrease the threads and allow the thread locker to fully cure before using the firearm.



INSTALLATION

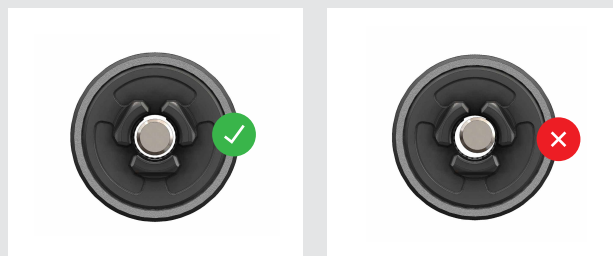
STEPS 13 & 14

Visually inspect that the CAT MOB with CAT TAFX QD mount assembly is properly installed on the muzzle device and that it's mounted straight to the centerline of the bore. Ensure the silencer isn't canted in any way and that the CAT MOB is fully shouldered against the taper on the muzzle device.



STEPS 15 & 16

Use a properly made, purpose built silencer alignment rod to ensure the silencer is properly mounted and concentric to the bore line.



To remove the CAT MOB with CAT TSFX QD mount assembly from the muzzle device, wait for the silencer to cool after use, ensure the firearm is completely unloaded and safe, then unscrew the silencer **CLOCKWISE** (right hand to loosen). Left hand threads are used on the CAT 1x16LH QD muzzle devices so that when uninstalling the silencer, the QD muzzle device will always stay on the host firearm rather than coming off and becoming stuck inside the silencer. If you experience the TSFX mount coming loose from the MOB silencer body, you may need to use additional torque between the two parts within spec, or you may use an optional thread locker. If you choose to use a thread locker between the direct thread mount and the CAT MOB, degrease the threads and allow the thread locker to fully cure before using the firearm.



CAT/MOB/1x16LH QD



MODEL: CAT/MOB/A1
CALIBER: 9 MM
WEIGHT TITANIUM: 11.0 OZ *
OVERALL LENGTH: 7.74"
DIAMETER: 1.65"
MIN BARREL LENGTH (TITANIUM):
NO RESTRICTIONS
RECOMMENDATION: 9MM SMG/PCC
FINISH: DLC
MOUNTING: SPOOKY 1 (INCLUDED)

INSTALLATION

STEP 1

Remove the magazine from the firearm, then visually and manually check and clear the action and chamber of the firearm. Ensure the host firearm is unloaded at all times.

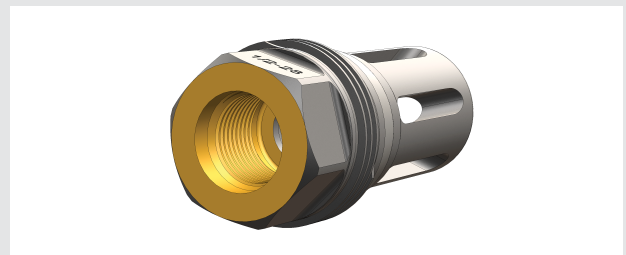
STEP 2

Always ensure the barrel thread and shoulders are clean and free of debris. To install the CAT 1x16LH QD muzzle device, clean and degrease barrel threads and make sure barrel shoulder is also clean (pink surfaces).



STEP 3

Ensure the CAT 1x16LH QD muzzle device internal thread and shoulders are clean, degreased, and free of debris (gold surfaces). Coat the barrel threads with a high temperature thread locker, such as Rocksett, according to that manufacturers instructions.



STEPS 4 & 5

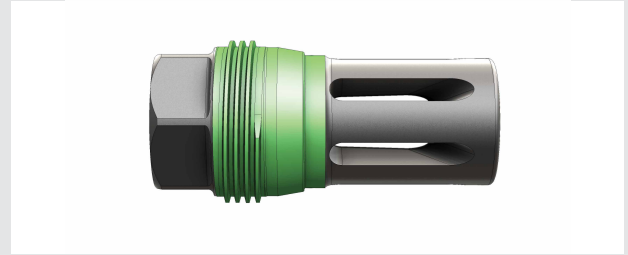
Screw the CAT 1x16LH QD muzzle device onto the barrel threads and torque it down with an 11/16" (.688") wrench to 25-30ft/lb. Allow the thread locker to fully cure before using the suppressor on a firearm.



INSTALLATION

STEP 6

Inspect the muzzle device and ensure the critical surfaces are clean and free of debris (green surfaces, especially the taper shoulder).



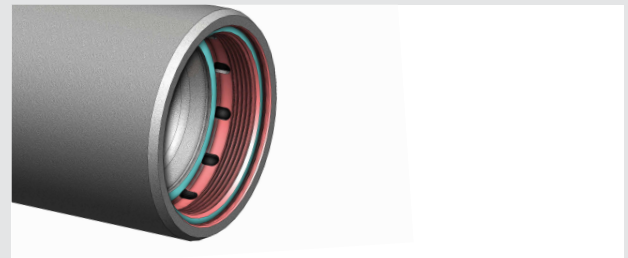
STEP 7

Prior to installing the CAT MOB on the muzzle device, inspect the internal mounting surfaces of the CAT MOB and ensure the critical mounting surfaces are clean and free of debris (red surfaces - pay special attention to making sure the blue taper shoulder region is clean and free of debris).



STEP 8

Prior to installing the MOB front cap, inspect the internal mounting surfaces of the CAT MOB front cap interface and ensure the critical mounting surfaces are clean and free of debris (red surfaces - pay special attention to making sure the blue shouldering regions are clean and free of debris).



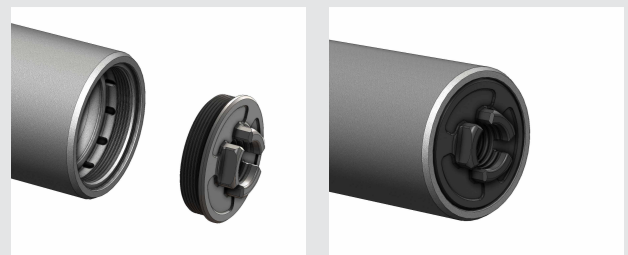
STEP 9

Inspect the MOB front cap and ensure the critical surfaces are clean and free of debris (green surfaces, especially the shouldering surface).



STEPS 10 & 11

Ensure the front cap is firmly installed by using an 11/16" (.6875") wrench or socket to screw it in CLOCKWISE (right hand to tighten).



INSTALLATION

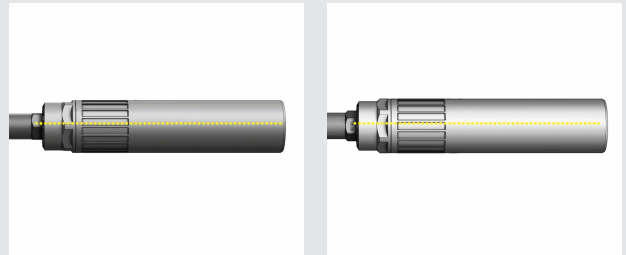
STEPS 12 & 13

To install the CAT MOB slide it over the muzzle device and thread COUNTER-clockwise (left hand to tighten) and tighten the CAT MOB strongly by hand to the muzzle device like you don't want it to come off, tightening the CAT MOB fully against its taper shoulder interface. When MOB is properly installed this taper shoulder interface will prevent loosening during use.



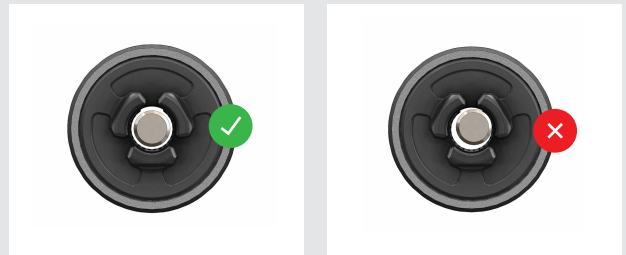
STEPS 14 & 15

Visually inspect that the CAT MOB is properly installed on the muzzle device and that it's mounted straight to the centerline of the bore. Ensure the silencer isn't canted in any way and that the CAT MOB is fully shouldered against the taper on the muzzle device.



STEPS 16 & 17

Use a properly made, purpose built silencer alignment rod to ensure the silencer is properly mounted and concentric to the bore line.



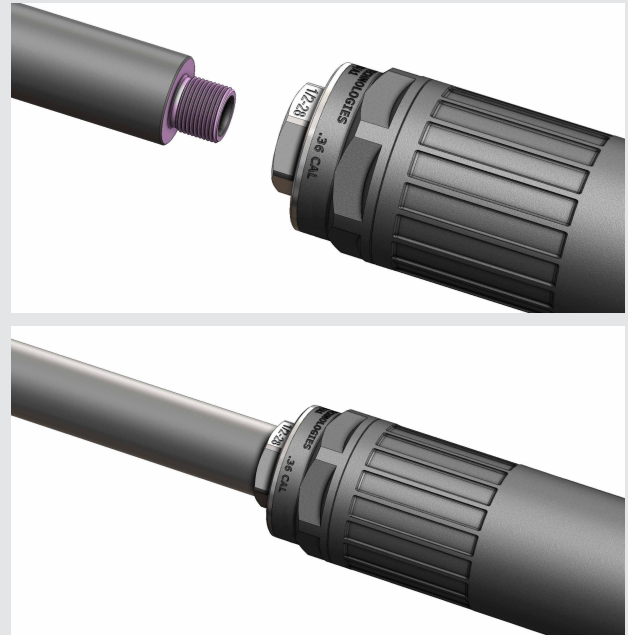
***To remove the CAT MOB from the muzzle device, wait for the silencer to cool after use, ensure the firearm is completely unloaded and safe, then unscrew the silencer CLOCKWISE (right hand to loosen). Left hand threads are used on the CAT 1x16LH QD muzzle devices so that when uninstalling the silencer, the QD muzzle device will always stay on the host firearm rather than coming off and becoming stuck inside the silencer.**



INSTALLATION

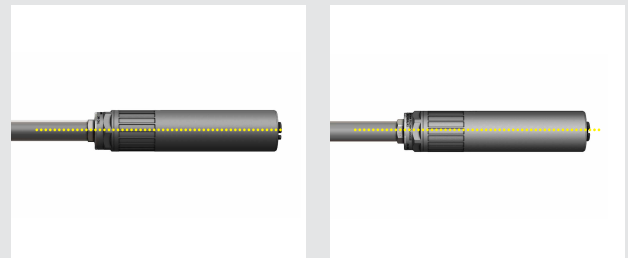
STEPS 13 & 14

To install the CAT MOB with direct thread mount assembly onto the firearm, again ensure the firearm is completely unloaded and safe, then slide the assembly over the barrel and thread it on **CLOCKWISE** (right hand to tighten) torquing it down first by hand like you don't want it to come off, tightening the CAT MOB direct thread mount assembly fully against the barrel shoulder. When installed by hand, you must check the silencer repeatedly during use to ensure it doesn't come loose. To ensure the assembly won't come loose, torque the direct thread mount down to the barrel using a 7/8" (.875") wrench to 25-30ft/lb. If you choose to use a thread locker between the direct thread mount and the CAT MOB, degrease the threads and allow the thread locker to fully cure before using the firearm.



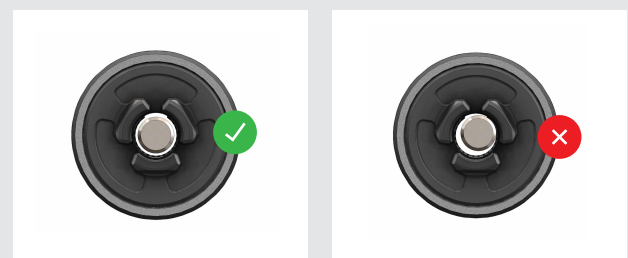
STEPS 15 & 16

Visually inspect that the CAT MOB with direct thread mount assembly is properly installed on the firearm barrel and that it's mounted straight to the centerline of the bore. Ensure the silencer isn't canted in any way and that the CAT MOB is fully shouldered against the barrel shoulder.



STEPS 17 & 18

Use a properly made, purpose built silencer alignment rod to ensure the silencer is properly mounted and concentric to the bore line.



To remove the CAT MOB with direct thread mount assembly from the host firearm barrel, wait for the silencer to cool after use, ensure the firearm is completely unloaded and safe, then unscrew the silencer **COUNTER CLOCKWISE** (left hand to loosen). If you experience the direct mount coming loose from the MOB silencer body, you may need to use additional torque between the two parts within spec, or you may use an optional thread locker. If you choose to use a thread locker between the direct thread mount and the CAT MOB, degrease the threads and allow the thread locker to fully cure before using the firearm.