

CAT/JL/MANUAL



WARNING - MATERIAL SPECIFIC FACTS

TITANIUM Ti6Al4V

C.A.T's Johnny Law (JL) Titanium .308 sniper focused suppressor is limited to barrel lengths of 16" or longer. Full Auto or High Rates of Fire (HRF) (greater than 30 rounds per minute) are expressly discouraged, unless in life threatening self-defense situations, as the JL Titanium is a lightweight, high performance suppressor dedicated to Low Rates of Fire (LRF), and the user should not exceed a maximum service temperature of approximately **650°F (343°C)**, or use ammunition types that have muzzle velocity exceeding 3300fps. Once this temperature threshold is reached, the suppressor should be allowed to cool down. Titanium Ti6Al4V has inherent material properties which give the material a lower heat conductivity rating, and the suppressor is susceptible to particle erosion and melting past this temperature limit. If the user notices discoloration on the exterior discontinue use and allow it to cool down. **Do not dip the suppressor in water in an attempt to cool it down.**

C.A.T recommends JL Titanium users invest in an infrared thermometer and create their own platform specific firing schedule, based on ammunition and barrel length. It is recommended to create this firing schedule by shooting five round groups, with one second intervals between rounds, then testing the temperature of the suppressor up to **550°F (288°C)**. At this operating temperature, the user should record the amount of time until the suppressor returns to **150°F (65°C)**. This would become the baseline firing schedule based on the user's platform and ammunition type.

C.A.T's JL Titanium has a dedicated "waffle" style erosion interface at the end of the blast chamber. This is a sacrificial erosion wall, and users should not be concerned if they are seeing wear, this is designed to support the erosion caused by unburnt particulates (especially in short barrel platforms) and is designed to protect other internal areas inside of the suppressor.

Excessive white sparking may be noticed upon first use, this is due to microscopic Titanium dust from the Additive Manufacturing process. Over the course of use this white sparking will subside but will never fully disappear, particularly on short barrel platforms. Titanium white sparking is separate from flash and cannot be controlled by a flash hider or other methods, as it is a byproduct of Titanium being classed as a reactive metal.

CAT/JL/1.375x24 HUB



MODEL: CAT/JL/A1
CALIBER: 762NATO
WEIGHT TITANIUM: 9.9 OZ (11.4 OZ MIL) *
OVERALL LENGTH: 8.20"
DIAMETER: 1.75"
MIN BARREL LENGTH: 16"
OPTIMIZED VELOCITY: 2200 – 2900FT/S
OPTIMIZED PLATFORM: 20" M110A2
TECHNOLOGY: SNIPER2
RECOMMENDATION: PRECISION RIFLE
FINISH: DLC
MOUNTING: 5/8x24 DIRECT THREAD (INCLUDED)

INSTALLATION

STEP 1

Remove the magazine from the firearm, then visually and manually check and clear the action and chamber of the firearm. Ensure the host firearm is unloaded at all times.

STEP 2

Always ensure the barrel thread and shoulders are clean and free of debris. To install the C.A.T 1x16LH QD muzzle device, clean and degrease barrel threads and make sure barrel shoulder is also clean (pink surfaces).



IF USING THE INCLUDED 5/8X24 DIRECT THREAD MOUNT:

STEPS 3,4 & 5

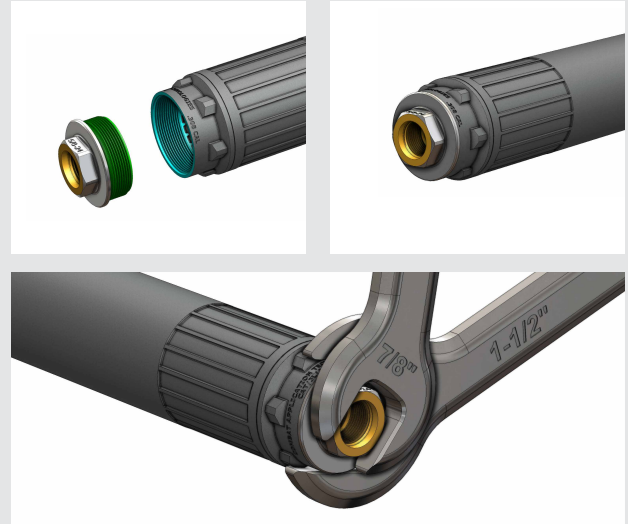
Prior to installing the 5/8x24 direct thread mount on the suppressor, inspect the mounting interface surfaces of the direct thread mount and ensure the threads and shoulders are clean and free of debris (gold and green surfaces). Ensure the C.A.T JL suppressor internal 1-3/8x24 (1.375x24) thread is clean and free of debris (blue).



INSTALLATION

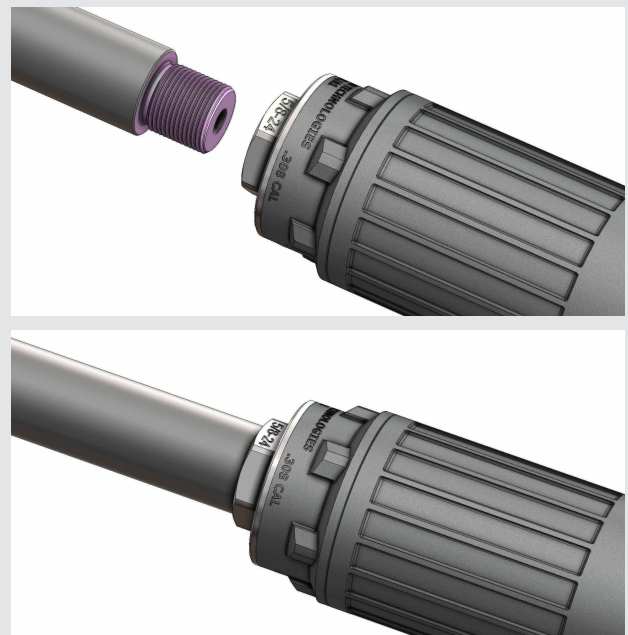
STEPS 6,7 & 8

Screw the direct thread mount into the back of the C.A.T JL suppressor and torque it down, with a 1-1/2" (1.500") wrench on the C.A.T JL wrench flats and a 7/8" (.875") wrench on the direct thread mount wrench flats, to 25-30ft/lb. If you choose to use a thread locker between the direct thread mount and the C.A.T JL, degrease the threads and allow the thread locker to fully cure before using the firearm.



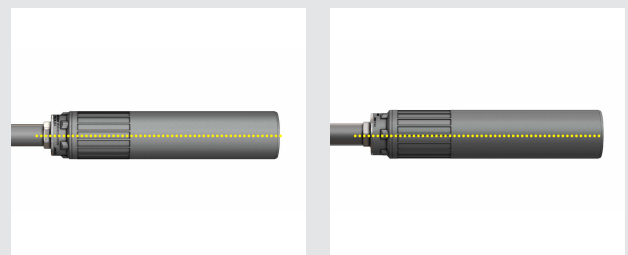
STEPS 9 & 10

To install the C.A.T JL with direct thread mount assembly onto the firearm, again ensure the firearm is completely unloaded and safe, then slide the assembly over the barrel and thread it on CLOCKWISE (right hand to tighten) torquing it down first by hand like you don't want it to come off, tightening the C.A.T JL direct thread mount assembly fully against the barrel shoulder. When installed by hand, you must check the suppressor repeatedly during use to ensure it doesn't come loose. To ensure the assembly won't come loose, torque the direct thread mount down to the barrel using a 7/8" (.875") wrench to 25-30ft/lb. If you choose to use a thread locker between the direct thread mount and the C.A.T JL, degrease the threads and allow the thread locker to fully cure before using the firearm.



STEPS 11 & 12

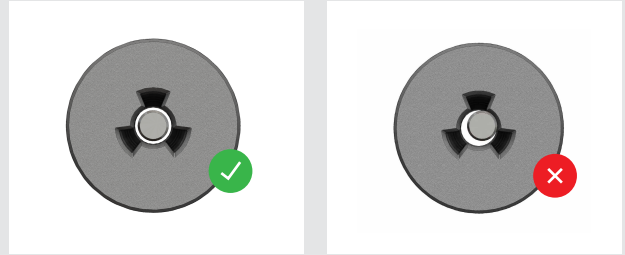
Visually inspect that the C.A.T JL with direct thread mount assembly is properly installed on the firearm barrel and that it's mounted straight to the centerline of the bore. Ensure the suppressor isn't canted in any way and that the C.A.T JL is fully shouldered against the barrel shoulder.



INSTALLATION

STEPS 13 & 14

Use a properly made, purpose built suppressor alignment rod to ensure the suppressor is properly mounted and concentric to the bore line.

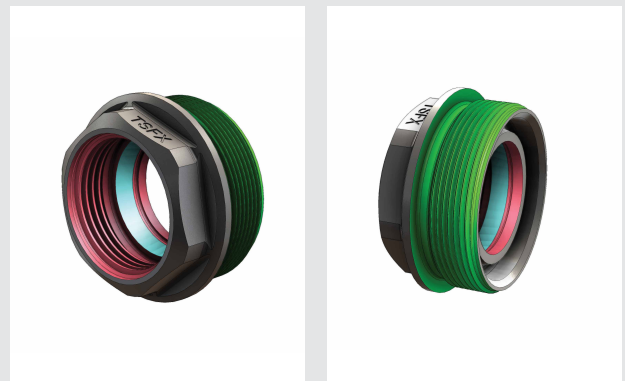


***To remove the C.A.T JL with direct thread mount assembly from the host firearm barrel, wait for the suppressor to cool after use, ensure the firearm is completely unloaded and safe, then unscrew the suppressor COUNTER CLOCKWISE (left hand to loosen). If you experience the direct mount coming loose from the JL suppressor body, you may need to use additional torque between the two parts within spec, or you may use an optional thread locker. If you choose to use a thread locker between the direct thread mount and the C.A.T JL, degrease the threads and allow the thread locker to fully cure before using the firearm.**

IF USING THE CAT TSFX QD MOUNT (SOLD SEPARATELY):

STEPS 1 & 2

Prior to installing the C.A.T TSFX QD mount in the suppressor, inspect the mounting interface surfaces of the C.A.T TSFX QD mount and ensure the critical mounting surfaces are clean and free of debris (red/blue surfaces internal and green surfaces external - pay special attention to making sure the blue internal taper shoulder region is clean and free of debris). Ensure the C.A.T JL suppressor internal 1-3/8x24 (1.375x24) thread is clean and free of debris (blue).



STEPS 3,4 & 5

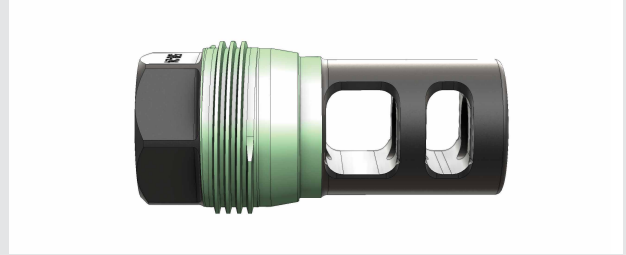
Screw the C.A.T TSFX QD mount into the back of the C.A.T JL suppressor and torque it down, with a 1-1/2" (1.500") wrench on the C.A.T JL wrench flats and a 1-3/16" (1.1875") wrench on the C.A.T TSFX QD mount wrench flats, to 25-30ft/lb. If you choose to use a thread locker between the C.A.T TSFX QD mount and the C.A.T JL, degrease the threads and allow the thread locker to fully cure before using the suppressor on a firearm.



INSTALLATION

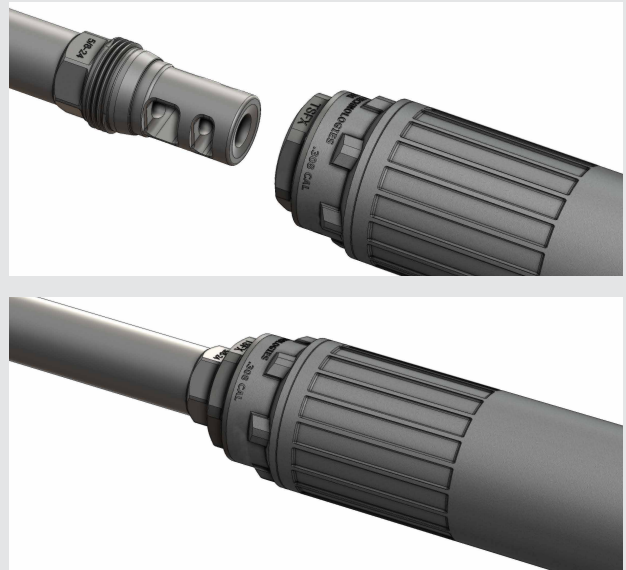
STEP 6

Inspect the muzzle device and ensure the critical surfaces are clean and free of debris (green surfaces, especially the taper shoulder).



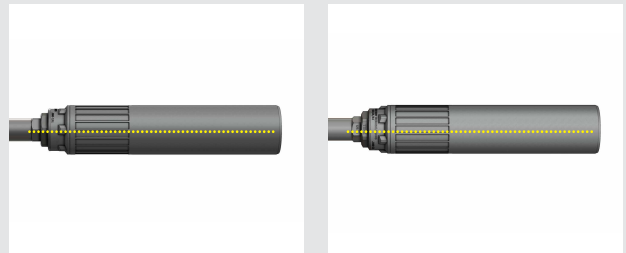
STEPS 7 & 8

To install the C.A.T JL with C.A.T TSFX QD mount assembly onto the firearm, again ensure the firearm is completely unloaded and safe, then slide the assembly over the C.A.T 1x16LH QD muzzle device (sold separately) and thread it on COUNTER-clockwise (left hand to tighten) and tighten the C.A.T JL strongly by hand to the muzzle device like you don't want it to come off, tightening the C.A.T JL fully against its taper shoulder interface. When JL is properly installed this taper shoulder interface will prevent loosening during use. If you choose to use a thread locker between the C.A.T TSFX QD mount and the C.A.T JL, degrease the threads and allow the thread locker to fully cure before using the firearm.



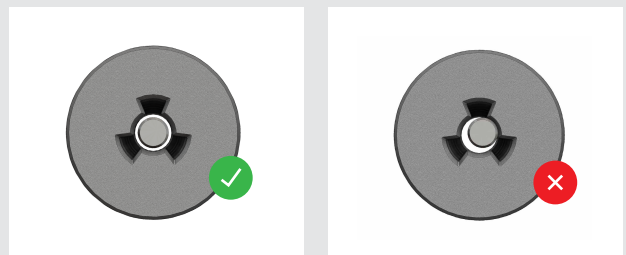
STEPS 9 & 10

Visually inspect that the C.A.T JL with C.A.T TSFX QD mount assembly is properly installed on the muzzle device and that it's mounted straight to the centerline of the bore. Ensure the suppressor isn't canted in any way and that the C.A.T JL is fully shouldered against the taper on the muzzle device.



STEPS 11 & 12

Use a properly made, purpose built suppressor alignment rod to ensure the suppressor is properly mounted and concentric to the bore line.



***To remove the C.A.T JL with C.A.T TSFX QD mount assembly from the muzzle device, wait for the suppressor to cool after use, ensure the firearm is completely unloaded and safe, then unscrew the suppressor CLOCKWISE (right hand to loosen). Left hand threads are used on the C.A.T 1x16LH QD muzzle devices so that when uninstalling the suppressor, the QD muzzle device will always stay on the host firearm rather than coming off and becoming stuck inside the suppressor. If you experience the TSFX mount coming loose from the JL suppressor body, you may need to use additional torque between the two parts within spec, or you may use an optional thread locker. If you choose to use a thread locker between the direct thread mount and the C.A.T JL, degrease the threads and allow the thread locker to fully cure before using the firearm.**



CAT/JL/1x16LH QD



MODEL: CAT/JL/A1
CALIBER: 762NATO
WEIGHT TITANIUM: 10.6 OZ (12.2 OZ MIL)*
OVERALL LENGTH: 8.55"
DIAMETER: 1.75"
MIN BARREL LENGTH: 16"
OPTIMIZED VELOCITY: 2200 - 2900FT/S
OPTIMIZED PLATFORM: 20" M110A2
TECHNOLOGY: SNIPER2
RECOMMENDATION: PRECISION RIFLE
FINISH: DLC
MOUNTING: SPOOKY 1 (INCLUDED)

INSTALLATION

STEP 1

Remove the magazine from the firearm, then visually and manually check and clear the action and chamber of the firearm. Ensure the host firearm is unloaded at all times.

STEP 2

Always ensure the barrel thread and shoulders are clean and free of debris. To install the C.A.T 1x16LH QD muzzle device, clean and degrease barrel threads and make sure barrel shoulder is also clean (pink surfaces).



STEP 3

Ensure the C.A.T 1x16LH QD muzzle device internal thread and shoulders are clean, degreased, and free of debris (gold surfaces). Coat the barrel threads with a high temperature thread locker, such as Rocksett, according to that manufacturers instructions.



STEPS 4 & 5

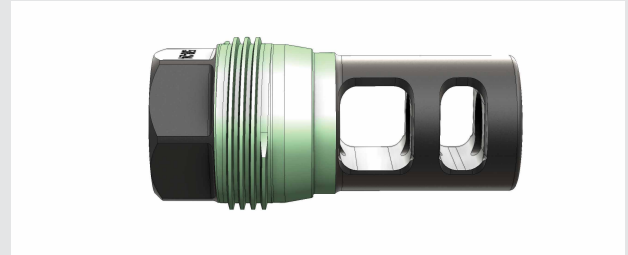
Screw the C.A.T 1x16LH QD muzzle device onto the barrel threads and torque it down with an 13/16" (.8125") wrench to 25-30ft/lb. Allow the thread locker to fully cure before using the suppressor on a firearm.



INSTALLATION

STEP 6

Inspect the muzzle device and ensure the critical surfaces are clean and free of debris (green surfaces, especially the taper shoulder).



STEP 7

Prior to installing the C.A.T JL on the muzzle device, inspect the internal mounting surfaces of the C.A.T JL and ensure the critical mounting surfaces are clean and free of debris (red surfaces - pay special attention to making sure the blue taper shoulder region is clean and free of debris).



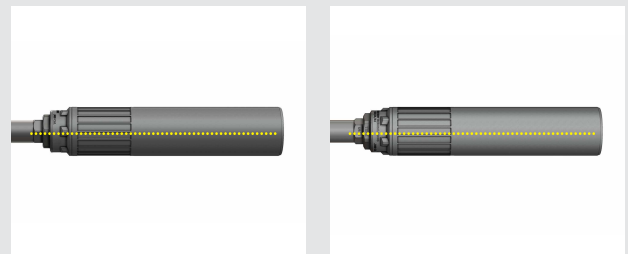
STEPS 8 & 9

To install the C.A.T JL, slide it over the muzzle device and thread COUNTER-clockwise (left hand to tighten) and tighten the C.A.T JL strongly by hand to fully engage the taper shoulder interfaces. When C.A.T JL is properly installed this taper shoulder interface will prevent loosening during use but it is highly recommended that users continue to check between cooling periods, as dirt and heat expansion can sometimes lead to interface separation.



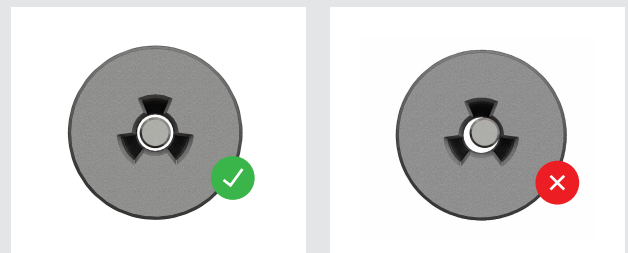
STEPS 10 & 11

Visually inspect that the C.A.T JL is properly installed on the muzzle device and that it's mounted straight to the centerline of the bore. Ensure the suppressor isn't canted in any way and that the C.A.T JL is fully shouldered against the taper on the muzzle device.



STEPS 12 & 13

Use a properly made, purpose built suppressor alignment rod to ensure the suppressor is properly mounted and concentric to the bore line.



***To remove the C.A.T JL from the muzzle device, wait for the suppressor to cool after use, ensure the firearm is completely unloaded and safe, then unscrew the suppressor CLOCKWISE (right hand to loosen). Left hand threads are used on the C.A.T 1x16LH QD muzzle devices so that when uninstalling the suppressor, the QD muzzle device will always stay on the host firearm rather than coming off and becoming stuck inside the suppressor.**

